

Deltek

Beyond Schedule Quality:

Hidden Gems in Acumen





Acumen Hidden Gems

Acumen is known for its ability to efficiently diagnose schedule quality issues, but many users are unaware of other features within the software that allow for advanced capabilities in metric creation and reporting.



Who here uses Acumen today?

This presentation is targeted to people who already know Acumen and want to gain deeper knowledge of its capabilities.

Happy to do a demo later for those not familiar with Acumen

1. Define Metrics using calculated fields

- ❑ Acumen allows users replicate any contractual KPI within metrics.
- ❑ The use of calculated fields assists the development of advanced metrics using user-defined fields.
 - ❑ Or simply sharing a common piece of the formula

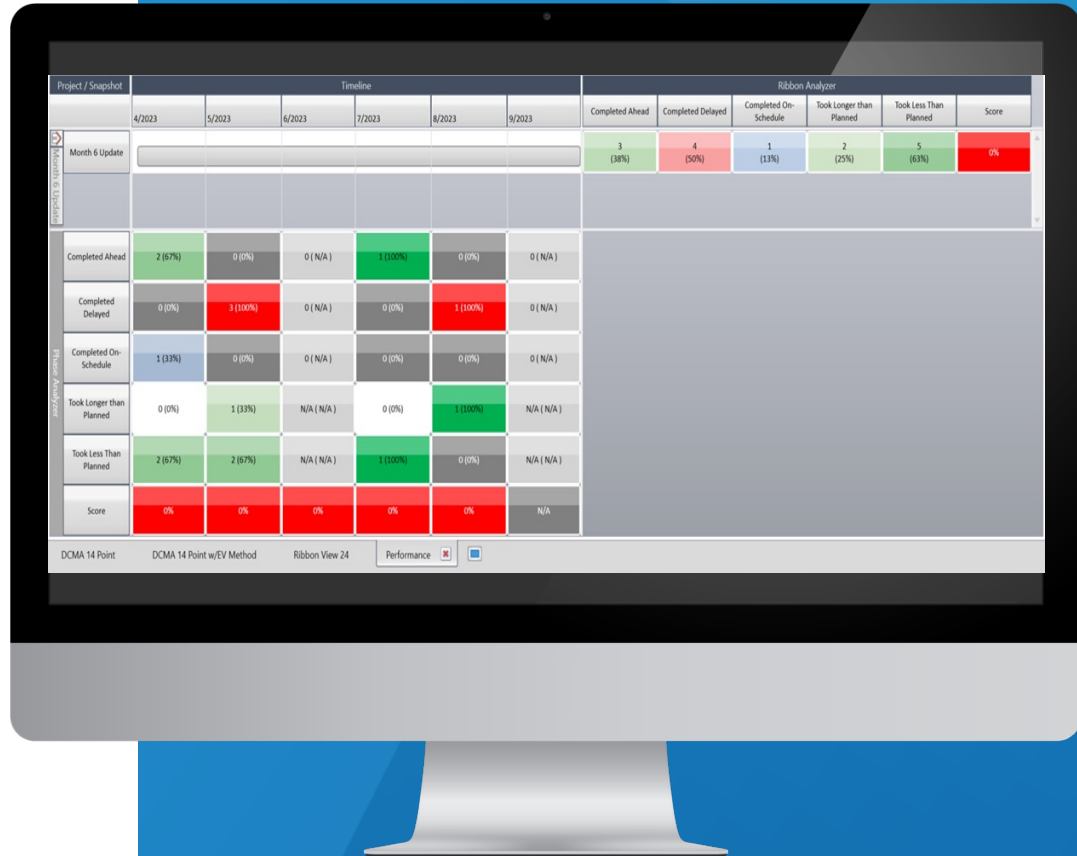
The screenshot displays the 'Calculated Fields' configuration window. On the left, a list of fields includes 'BLFinishVSFinish' and 'DurationComplete'. The right pane shows the configuration for 'BLFinishVSFinish' with the following details:

Name	Description
BLFinishVSFinish	BLvsFinishVariance

Formula:
ACT(Finish)-ACT(BaselineFinish)

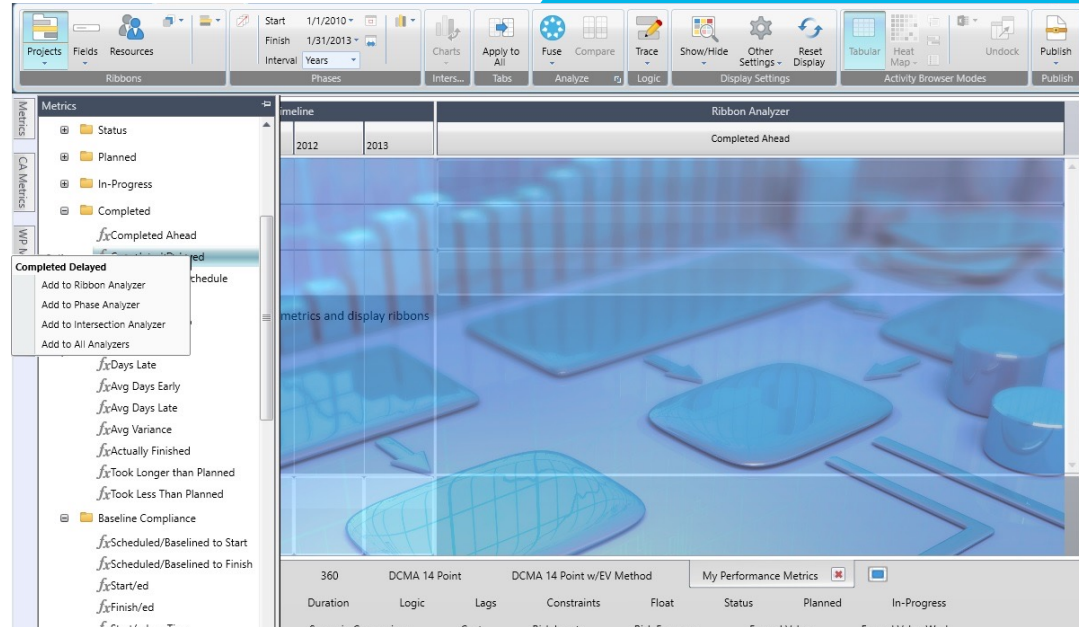
2. Performance Metrics

- Using performance metrics for consistent reporting throughout the project delivery
- View trends across multiple schedule versions
- Compare scheduled dates vs actuals on the most recent updates or back to the baseline



2. Performance Metrics

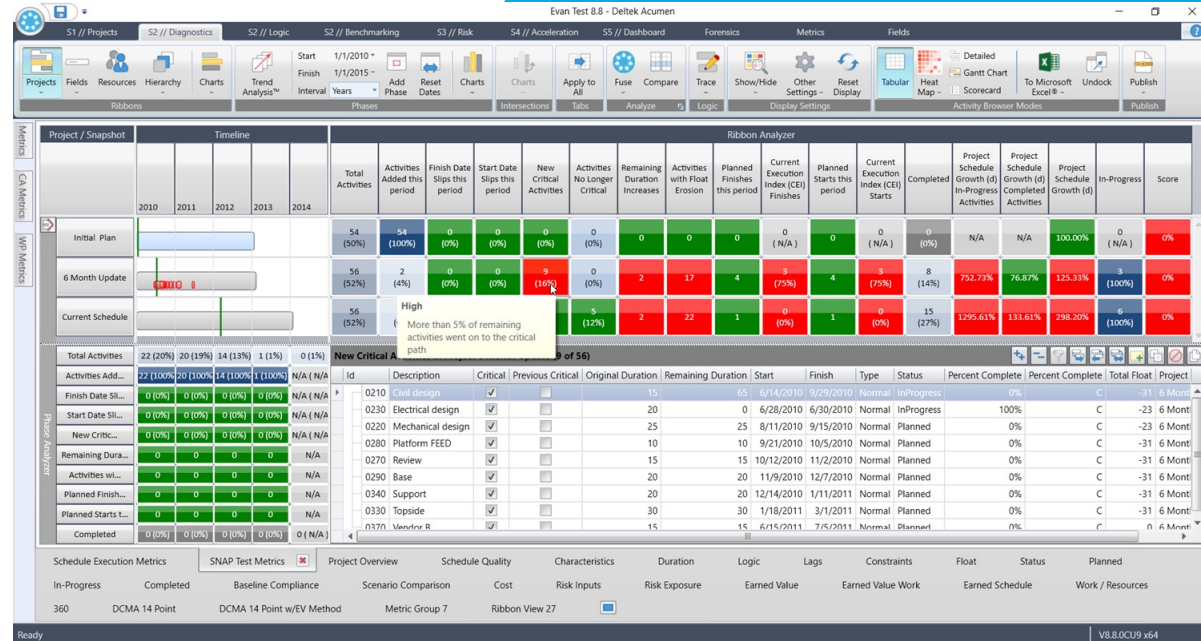
- » Acumen includes many groups of performance related metrics.
 - » In-Progress
 - » Completed
 - » Baseline Compliance
- » We expect you to choose what makes sense for your projects



Create your own groups of metrics

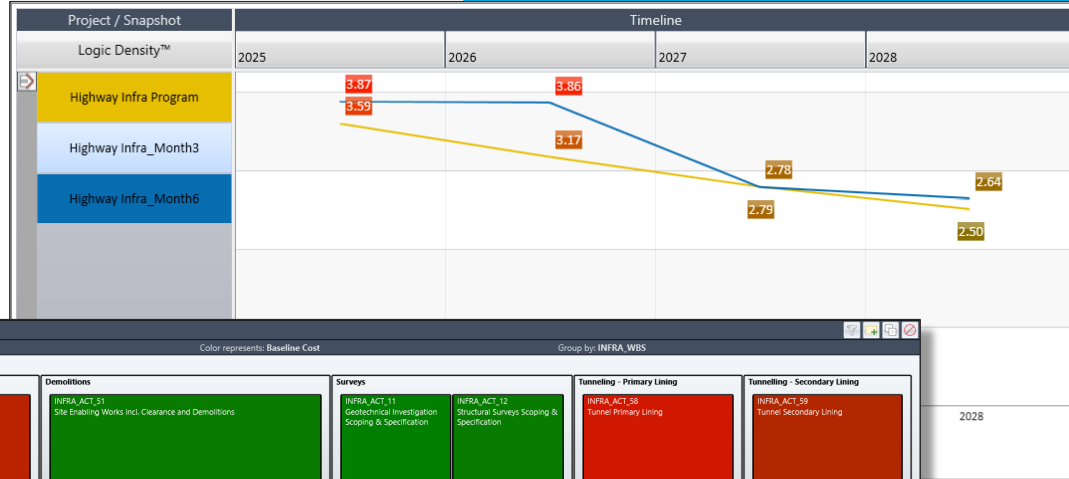
3. SNAP() Metric Function

- ❑ Using SNAP function for metrics that see trends over multiple schedule updates.
- ❑ Examples include:
 - ❑ Float erosion over 2 periods
 - ❑ Activities added this period
 - ❑ New critical activities

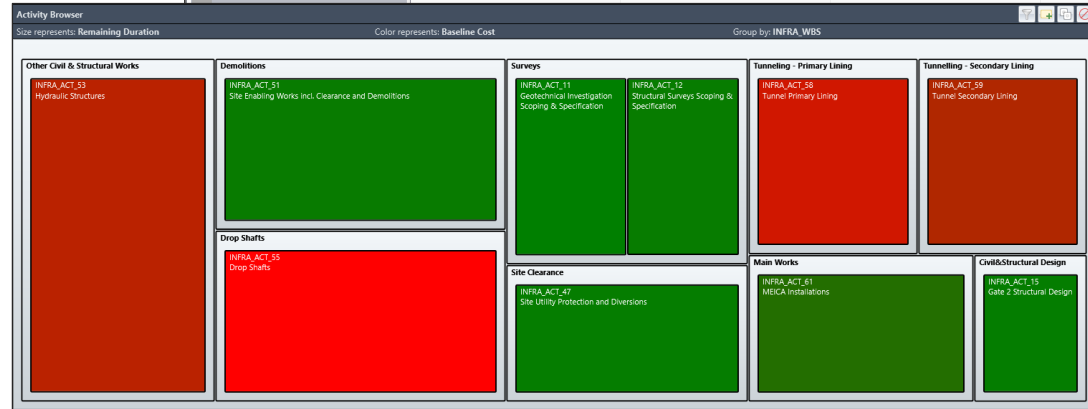


4. Advanced charting and reporting

□ Trend charts across multiple updates and project timeline.



□ Graphs to enhance reporting e.g. Heat maps, trace back & forward.



5. Acumen Scoring

❑ **Average of metrics:** based on the metrics weights, the total score reflects the weighted average across all activities within the schedule.

Id	Description	Missing Logic	Critical	Hard Constraints	Negative Float	Insufficient Detail™	Number of Lags	Number of Leads	Merge Hotspot	Score
INFRA_ACT_58	Tunnel Primary Lining	●	■	●	●	●	●	●	●	100%
INFRA_ACT_59	Tunnel Secondary Lining	●	■	●	●	●	●	●	●	100%
INFRA_ACT_60	Complete tunnel secondary lining	●	■	●	●	●	●	●	●	100%
INFRA_ACT_61	MEICA Installations	●	■	●	●	●	●	●	●	100%
INFRA_ACT_65	Landscaping	●	□	●	●	●	●	●	●	100%
INFRA_ACT_62	MEICA Testing	●	■	●	●	●	●	●	●	100%
INFRA_ACT_63	MEICA Sign off	●	■	●	●	●	●	●	●	100%
INFRA_ACT_66	Interfaces Testing & Sign off	●	■	●	●	●	●	●	●	100%
INFRA_ACT_69	Demobilisation	●	□	●	●	●	●	●	●	100%
INFRA_ACT_67	Inspection & Testing	●	■	●	●	●	●	●	◆	91%
INFRA_ACT_68	Commissioning	●	■	●	●	●	●	●	●	100%
INFRA_ACT_70	Handover	◆	■	●	●	●	●	●	●	82%
Totals Activities		2	37	1	0	4	1	0	6	98%
Weight Factors		18%	0%	18%	18%	9%	9%	18%	9%	
Score excl. Weight Factors		97%	48%	99%	100%	94%	99%	100%	92%	
Score X Weight Factors		18%	0%	18%	18%	9%	9%	18%	8%	98%

Acumen Factors	Weights
-10	18%
0	0%
-10	18%
-10	18%
-5	9%
-5	9%
-10	18%
-5	9%
Sum	-55
	100%

5. Acumen Scoring

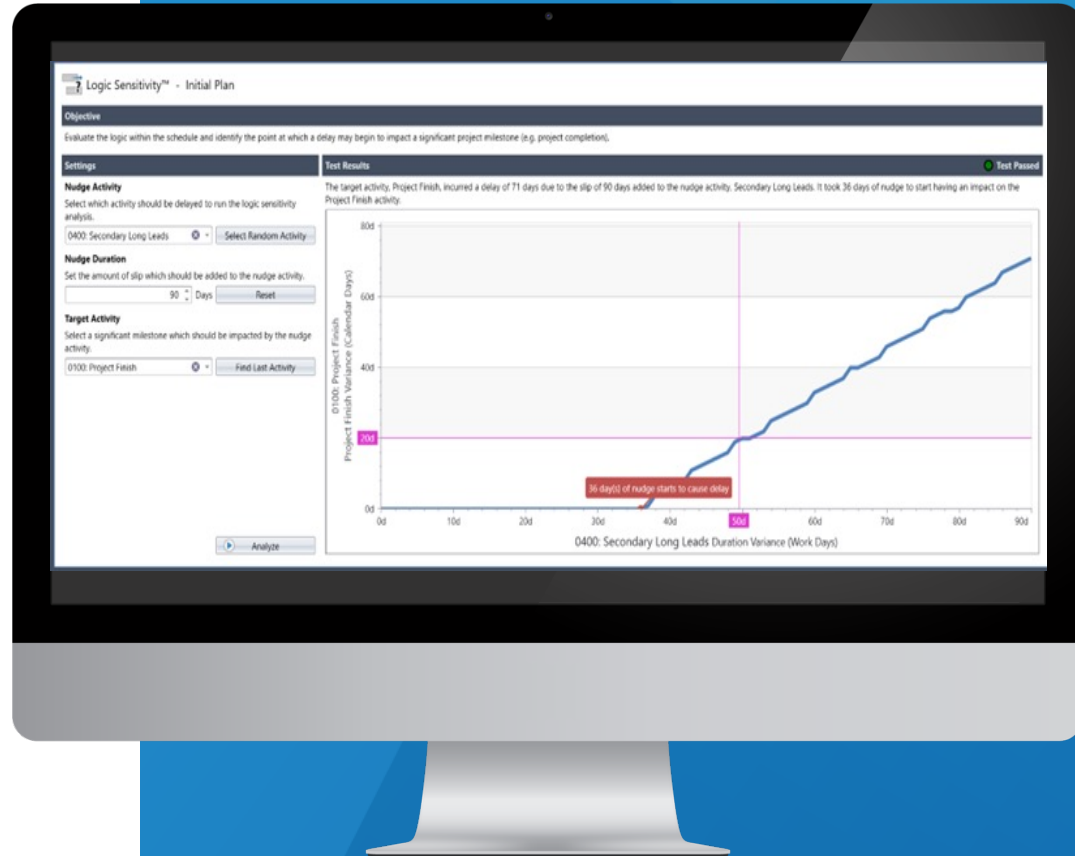
- Record Fails if one metric fails: the average number of activities that didn't fail any metric (activities with score 100%).

Id	Description	Miss	Critic	Hard	Neg	Insuf	Num	Num	Mez	Score	
54	INFRA_ACT_52	Temporary Structures	●	☐	●	●	◆	●	●	●	0%
55	INFRA_ACT_53	Hydraulic Structures	●	☐	●	●	◆	●	●	●	0%
56	INFRA_ACT_64	Permanent Above Ground Structures	●	☐	●	●	◆	●	●	●	0%
57	INFRA_ACT_54	Connection Culvert: complete Base slab, Walls and	●	☐	●	●	●	●	●	●	100%
58	INFRA_ACT_55	Drop Shafts	●	☐	●	●	●	●	●	◆	0%
59	INFRA_ACT_56	Shaft Primary Lining & Base Slab Complete	●	☐	●	●	●	●	●	●	100%
60	INFRA_ACT_57	Start Tunneling	●	☐	●	●	●	●	●	●	100%
61	INFRA_ACT_58	Tunnel Primary Lining	●	☐	●	●	●	●	●	●	100%
62	INFRA_ACT_59	Tunnel Secondary Lining	●	☐	●	●	●	●	●	●	100%
63	INFRA_ACT_60	Complete tunnel secondary lining	●	☐	●	●	●	●	●	●	100%
64	INFRA_ACT_61	MEICA Installations	●	☐	●	●	●	●	●	●	100%
65	INFRA_ACT_65	Landscaping	●	☐	●	●	●	●	●	●	100%
66	INFRA_ACT_62	MEICA Testing	●	☐	●	●	●	●	●	●	100%
67	INFRA_ACT_63	MEICA Sign off	●	☐	●	●	●	●	●	●	100%
68	INFRA_ACT_66	Interfaces Testing & Sign off	●	☐	●	●	●	●	●	●	100%
69	INFRA_ACT_69	Demobilisation	●	☐	●	●	●	●	●	●	100%
70	INFRA_ACT_67	Inspection & Testing	●	☐	●	●	●	●	●	◆	0%
71	INFRA_ACT_68	Commissioning	●	☐	●	●	●	●	●	●	100%
72	INFRA_ACT_70	Open for Traffic	◆	☐	●	●	●	●	●	●	0%
73	Totals		2	37	1	0	4	1	0	6	82% =AVERAGE(K2:K72)



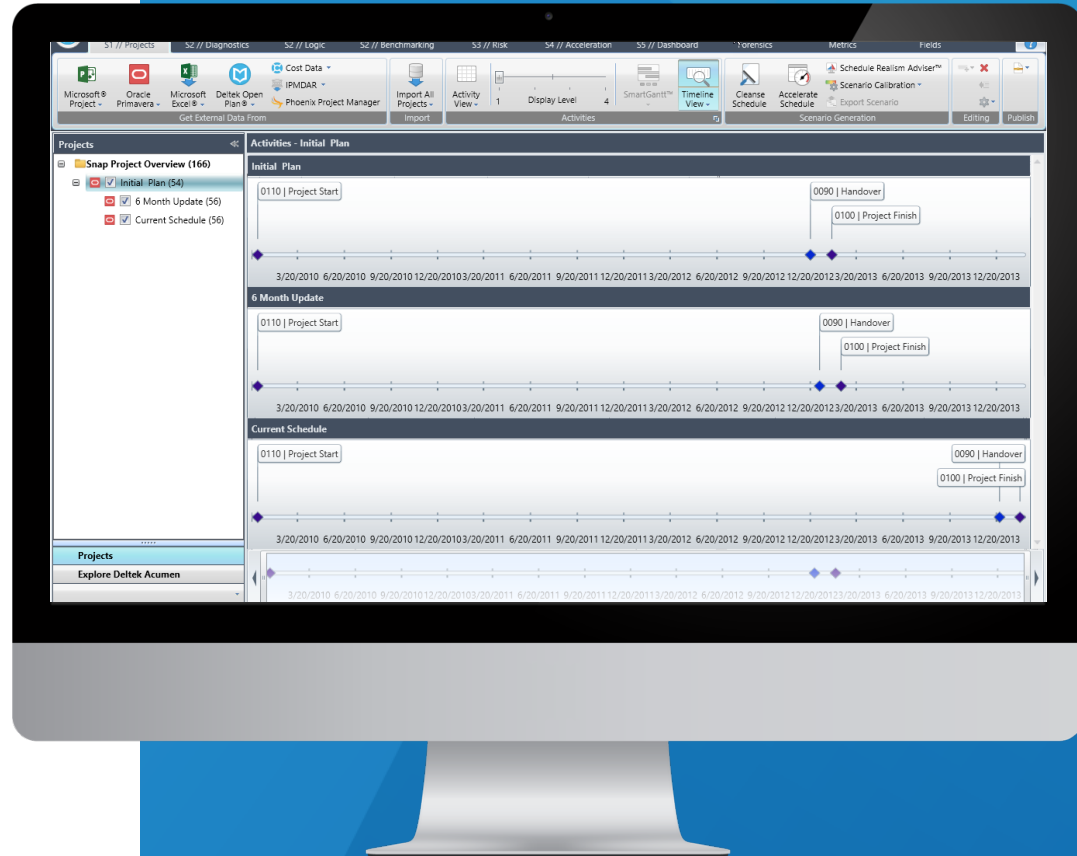
6. Scenarios and What-if Analysis

- ❑ Address schedule quality issues in Acumen
- ❑ Delay Impact Analysis
- ❑ Recovery Schedule Scenarios
- ❑ Risk Adjusted Schedules



7. Timeline View

Easy visual comparison of snapshots



Deltek

Questions?

Please contact
robertedwards@deltek.com
with additional questions