

OFFICIAL

SOUTH AUSTRALIA **THE DEFENCE STATE**

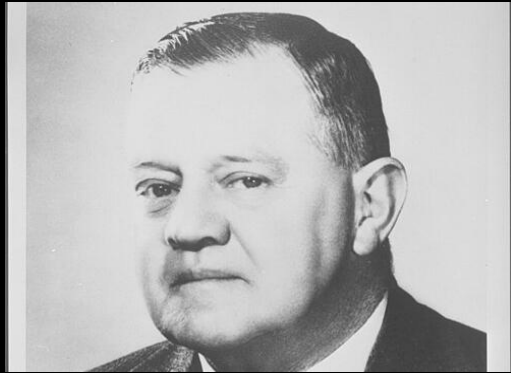
Ian Spencer, Executive Director
Defence and Industry



Government of
South Australia

DEFENCE 

SOUTH AUSTRALIA'S DEFENCE HISTORY



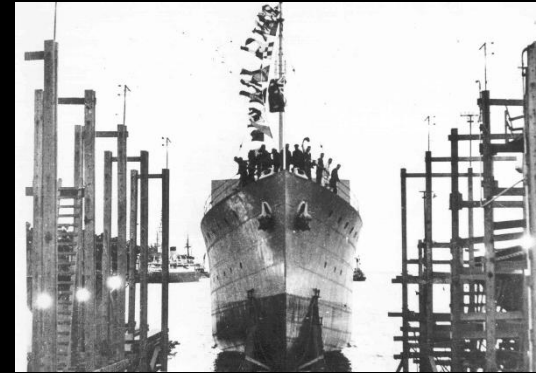
ESSINGTON LEWIS

- SA industrialist and wartime director
- Helped establish defence capabilities in SA
- Laid the foundations for Australia's sovereign industrial base



PORT WAKEFIELD PROOF RANGE

- Australia's first defence science institution, opened in 1929
- Scientific testing of weapons and ammunition



WARTIME SHIPBUILDING

- Whyalla shipyard established to support WWII efforts
- Bathurst-class Minesweepers built in 1941



WOOMERA TEST RANGE

- Established in 1947
- Created to develop and test guided weapons and rockets post-WWII
- First rocket launches in 1950s

OFFICIAL

OFFICIAL

DEFENCE SA IS SOUTH AUSTRALIA'S LEAD GOVERNMENT AGENCY FOR ALL DEFENCE MATTERS.

MARITIME



AEROSPACE



LAND



SPACE



ADVANCED SYSTEMS



**RESEARCH,
DEVELOPMENT &
INNOVATION**



DEFENCE INDUSTRY



VETERANS



SOUTH AUSTRALIA THE DEFENCE STATE

INFRASTRUCTURE

DEFENCE

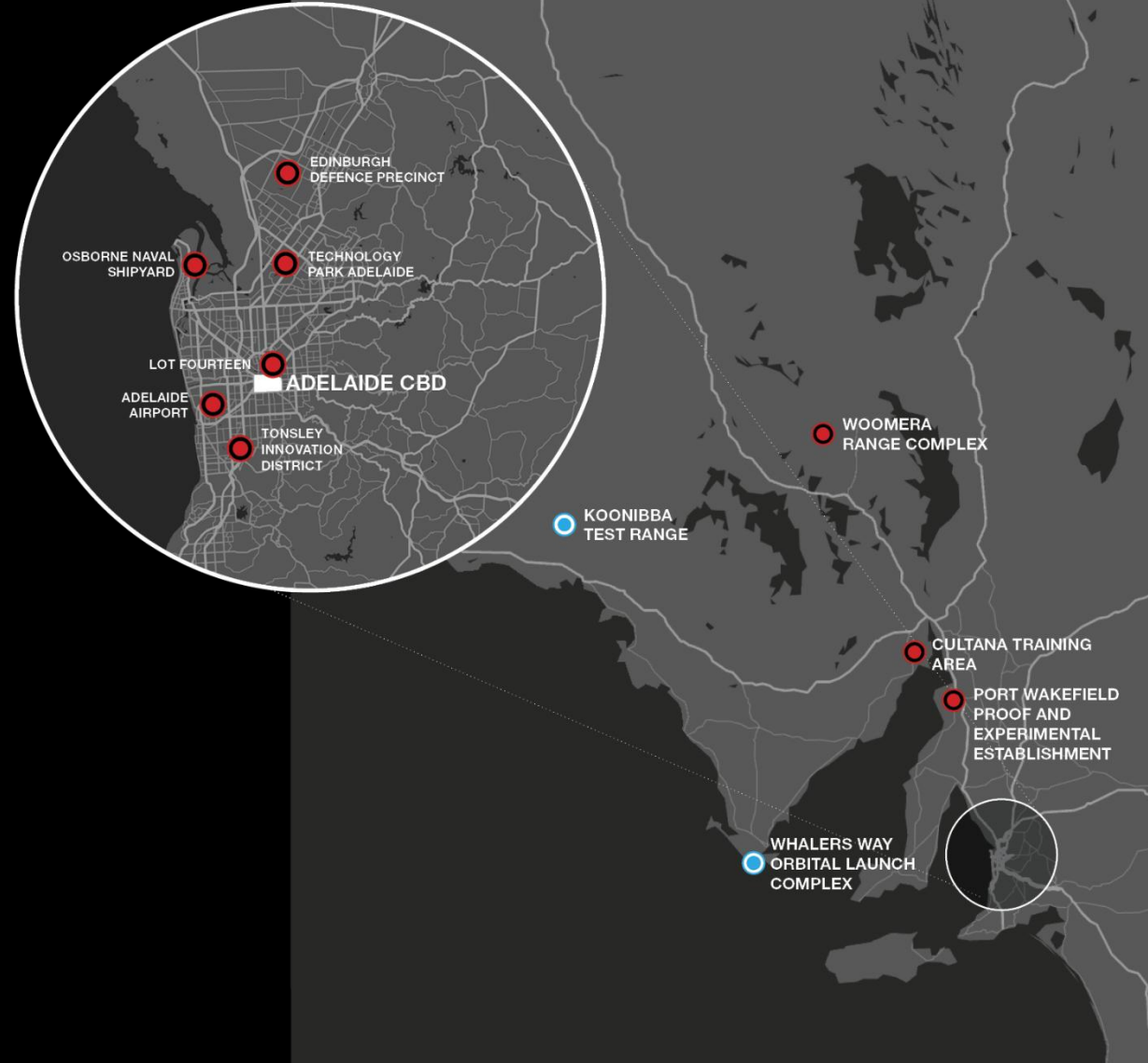
- Osborne Naval Shipyard + NPSCY
- Edinburgh Defence Precinct (RAAF, Army, industry)

INNOVATION PLACES

- 22 + Innovation Places in SA
- Tonsley Innovation District (advanced manufacturing)
- Lot Fourteen (start-up and scale-up)
- Technology Park (software systems, future industries)

TEST AND TRAINING AREAS

- Woomera Range Complex
- Cultana Training Area
- Port Wakefield Proof and Experimental Establishment
- Koonibba Test Range (space)
- Whalers Way Orbital Launch Complex (space)



CURRENT SA MARITIME PROGRAMS



COLLINS CLASS SUBMARINES

- Full-cycle docking underway
- LOTE – commencing in 2026, for 6 x subs on a 2 year cycle
- Upgrade by ASC ~ \$6bn



HUNTER CLASS FRIGATES

- Type 26 Prototyping modules ongoing
- 2024 – 2043 manufacture of 6 vessels by BAE Systems ~ \$45bn



HOBART CLASS AWD

- Upgrade of Aegis Combat System for 3 x AWDs underway
- Managed by Navantia, Lockheed Martin Australia and Saab ~ \$5bn
- 3 replacement AWDs to be built at Osborne from ~2043



SSN-AUKUS

- First SSN-AUKUS built in Adelaide to be delivered in the early 2040s
- BAE Systems and ASC selected as Sovereign Submarine Build Partners.

NUCLEAR-POWERED SUBMARINE CONSTRUCTION YARD

WORLD-LEADING SUBMARINE SHIPYARD

- Estimated >\$30 billion project
- 10x larger than Osborne South Development
- One of only four connected shipyards across AUKUS partnership
- 3 Areas – fabrication; outfitting and consolidation, testing, launching and commissioning.
- Skills & Training Academy, work commenced 2025

JOBS FOR GENERATIONS

- 4,000 workers for shipyard design and infrastructure
- 5,500 shipyard jobs at peak submarine production



Artist impression provided by the Department of Premier and Cabinet



EDINBURGH DEFENCE PRECINCT

DEFENCE SUPERBASE

- Hub for national defence research, manufacturing and sustainment
- Home to 6,000 Defence personnel, public servants and contractors
- Edinburg Parks industrial precinct is home to major defence companies
- New infrastructure to support intelligence, surveillance and reconnaissance capability
- Major construction to continue beyond 2030
- BAE Systems Australia investing ~\$25m in upgrades



DEEP MAINTENANCE MODIFICATION FACILITY

AIRCRAFT SUSTAINMENT & MODIFICATION

- \$200m defence infrastructure investment adjacent to RAAF Base Edinburgh
- New 4 x aircraft hangars to maintain and modify RAAF P-8A Poseidon and E-7A Wedgetail fleet, and allied aircraft
- Operated by Boeing Australia
- Includes offices, workshops, stores, amenities areas, plant rooms and connects to RAAF Base
- 1,000 workers contributed to construction project
- Facility will support 180 skilled jobs including aircraft maintenance, engineering, avionics and logistics

INNOVATION CENTRE LOT FOURTEEN

HUB FOR INNOVATION & COMMERCIALISATION

- Defence, space, critical technologies and cyber industries hub
- \$60m Australian Defence Technologies Academy, joint South Australian and Australian Government funding
- \$20m Innovation Hub
- \$20m space assembly, integration and testing facility
- BAE Systems Australia anchor tenant
- Key tenants to move in by the end of 2028.



DEFENCE ESTATE AUDIT

MODERNISING DEFENCE ESTATE

- Audit focused on:
 - Strengthening resilience of Defence estate
 - Accelerating delivery of major infrastructure
 - Consolidation of underutilised facilities
- Four SA sites identified for divestment:
 - Selected buildings at Edinburgh Parks
 - Hampstead Barracks
 - Warradale Barracks - partial divestment
 - Woodside Barracks
- Potential opportunities to support urban renewal and housing supply





SPACE MANUFACTURING FACILITY

\$20M SPACE ASSEMBLY, INTEGRATION & TEST COMMON USER FACILITY WILL PROVIDE SPACE COMPANIES WITH ACCESS TO MANUFACTURING FACILITIES ESSENTIAL TO THE SECTOR'S FUTURE GROWTH.

- Future location – Innovation Centre at Lot Fourteen
- Focus:
 - Advanced manufacturing
 - Assembly, integration and testing
 - Research and development
 - Accelerate global supply chain opportunities.



WORKFORCE

WORKFORCE AND SKILLS TASKFORCE

- Joint Commonwealth – South Australia taskforce implementing a skills and workforce plan to support delivery of current and future projects
- 22 initiatives, addressing immediate needs and building long-term capability

KEY ACTIONS

- 5 technical colleges across metro and regional SA now open, supported by industry partners
- \$500m Skills & Training Academy at Osborne
- New degree apprenticeships and STEM pathways to build defence skills

**ANY
QUESTIONS?**



Government of
South Australia

DEFENCE SA

OFFICIAL

THANK YOU



Government of
South Australia

DEFENCE SA